

# Prairielands eLine

**Prairielands Groundwater Conservation District**  
**www.prairielandsgcd.org**

## New Well Database Program Underway

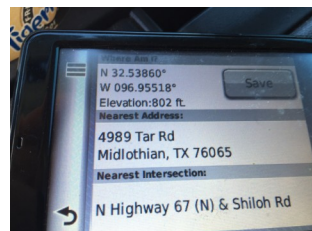
Over the summer, Prairielands GCD contracted with Texian Geospatial to develop a GIS software application to improve field data collection and mapping capabilities for the district.

The development team, Prairielands Field Technician Shawn Davis and Texian Geospatial founder David Pritchard used ARCGIS desktop software and a Trimble R1 field

GPS unit to create a cloud-based application that can be viewed from locations other than the district offices.

When operational, the application will allow district personnel to access and input well data using an iPhone and GPS unit. Recent advances in GPS technology incorporated in the new program will increase the accuracy of well

location information to within 2 feet – an ongoing problem experienced with the current Texas Water Development Board data.



Screenshot of newly developed well data iPhone app.

## Prairielands Participates in the Big B Event

October 1<sup>st</sup> found the staff of Prairielands out in Somervell County at the Big B Event in Glen Rose.

This annual event hosted by the Prairie Rose chapter of the Native Plant Society of Texas features activities



With the awning extended, staff can man an additional table area to provide information to passersby and invite them to tour the trailer exhibits.

and programs related to birds, bees, and butterflies. In addition, Dinosaur Valley State Park prepared a Brontosaurus booth. The Master Gardeners presented BEST gardening practices.

Speakers throughout the day presented information on bats, bluebonnets, and native blooms. Many varieties of native plants were available for purchase from the Prairie Rose chapter booth.

This year, Prairielands joined in the event with the BIG trailer discussing BEST water conservation

practices inside the home and outside in the local landscapes.



A young visitor to the water education trailer asks Karen Siddall, education administrator, about water wells and the Woodbine aquifer.

**Fall 2016**

**Volume 2, Issue 4**

### Inside this issue:

Groundwater District Accountability	2
Education Video Completed	3
Upcoming Dates, Meetings	3
New Logo Adopted	3
GMA's: Who, What, & Where	4
GMA-8 & Desired Future	4

### Special points of interest:

- Well database improvements push forward.
- Education trailer and video are available for presentations and community events.
- Groundwater Management Area 8 continues to work toward developing a vision for area aquifers.

# Accountability at All Levels for Prairielands GCD

There are over 100 groundwater conservation districts in the state of Texas. The first one was created in 1951, and more are legislated into existence each session of the Texas legislature.

Groundwater conservation districts, however, are initially formed at the local level, and the first layer of oversight resides in local hands before undergoing scrutiny at the state level.

Locally, this means direct guidance of the district by local residents appointed by the four counties' commissioners to serve on the board of directors; input by residents and business owners at

monthly board meetings held in accordance with the Open Meetings Act; records prepared and retained according to the Texas Water Code (TWC) and made available to the public as per the Public Information Act; an annual financial audit performed by a third-party CPA, and an annual performance review of the general manager.

At the state level, groundwater districts receive oversight from the Texas Water Development Board (TWDB), the Texas Commission on Environmental Quality (TCEQ), and the State Auditor's Office. In addition, anyone dissatisfied with a rule or order issued by the

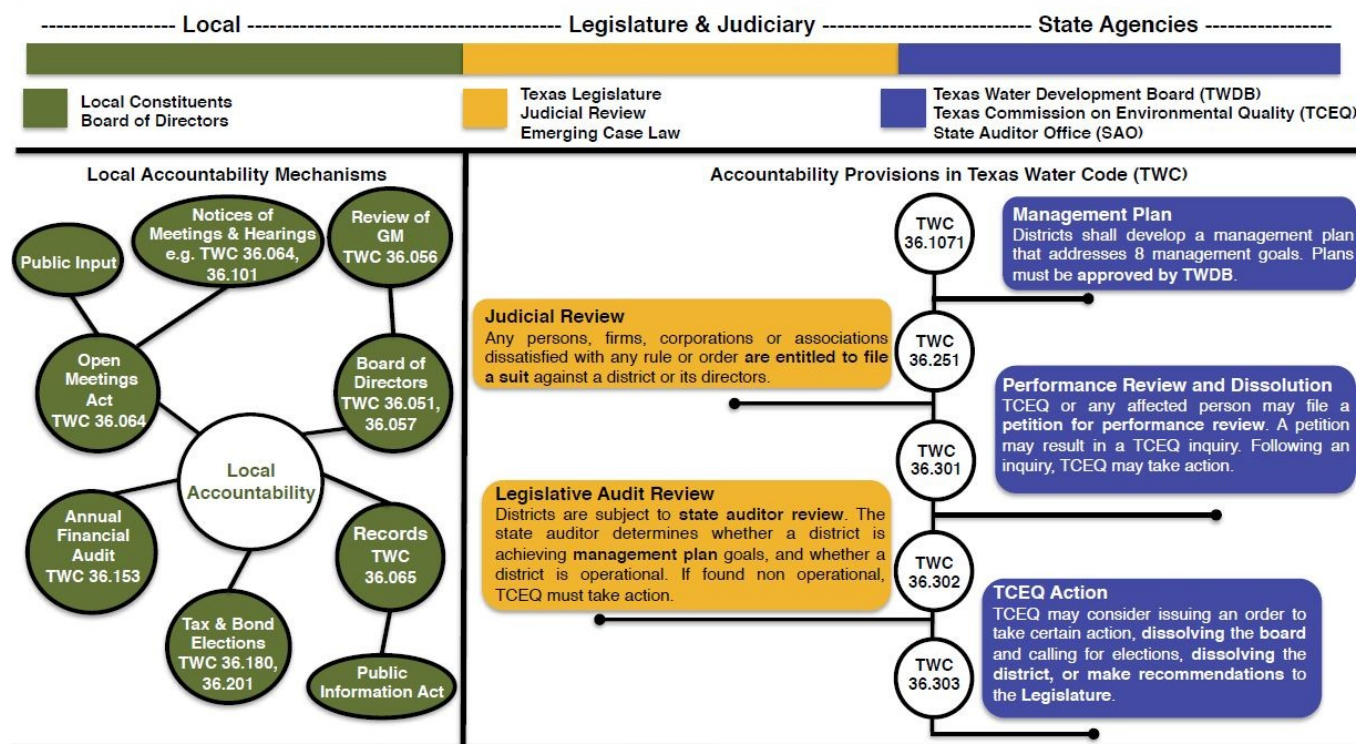
groundwater district is entitled to file a suit against the district or its directors which would provide judicial review.

The following diagram was prepared by support staff of the Texas Alliance of Groundwater Districts this past summer to aid legislators and the public in understanding the depth and breadth of oversight currently in place that guide the decisions and actions of groundwater conservation districts across the state. It was presented at the Senate Agriculture, Water, and Rural Affairs Committee hearing regarding groundwater district performance held in Austin on July 25, 2016.

## Current GCD Accountability Metrics

A review of accountability mechanisms in effect

A summary of current accountability mechanisms is provided to improve the dialogue on Groundwater Conservation District (GCD) performance. Current evaluation methods ensure statutory compliance and accountability on three levels: local, legislative & judiciary, and state agencies.



TAGD Texas Alliance of Groundwater Districts

Current GCD Accountability Metrics: The diagram above was prepared by support staff of the Texas Alliance of Groundwater Districts in the summer of 2016 as an aid to legislators and the public in understanding the depth and breadth of oversight currently in place that guides the decisions and actions of groundwater conservation districts across the state.

## New Education Video Up and Running

During the spring and summer, when not out on the road with the BIG trailer, Prairielands staff were busy working with our database administrator, Aquaveo, producing a 10-minute educational video about aquifers, groundwater, and the district itself.



New groundwater education video is available on the district website.

Thanks to the generosity of our neighboring, sister district, Middle Trinity Groundwater Conservation District, in Stephenville, Prairielands was allowed to customize the original Middle Trinity video creation to depict conditions in our area and accurately represent our own district at a cost far less than what would have been possible alone.

The video will be used in concert with presentations to community groups and organizations and schools. The video is available for viewing online at our website—



The new video describes groundwater, aquifers, how water moves underground and is accessed, and water conservation.

[www.prairielandsgcd.org/Videos.html](http://www.prairielandsgcd.org/Videos.html), Facebook — [www.facebook.com/prairielandsgcd/](https://www.facebook.com/prairielandsgcd/), and YouTube.com — [youtube.com/watch?v=3S7xzOitKxc](https://youtube.com/watch?v=3S7xzOitKxc).

## Upcoming Dates, Meetings, and Conferences of Note

Take note! A number of important dates, meetings, and conferences occur right after the first of the year.

**January 10** – Opening day of the 85<sup>th</sup> Texas Legislature – Austin

**January 9-11** – Groundwater Management District Association (GMDA) Winter Conference – Fort Worth  
[www.gmdaconference2017.com](http://www.gmdaconference2017.com)

**January 11-12** – Texas Water Conservation Association/Texas Rural Water Association (TWCA/TRWA) Law Conference – Austin

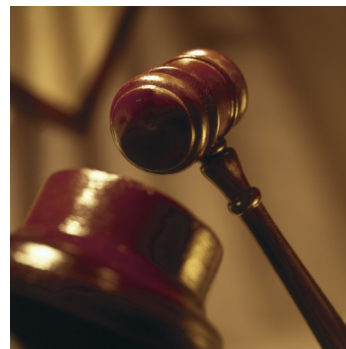
[www.twca.org/Public/Public/Water\\_Law\\_Seminar.aspx](http://www.twca.org/Public/Public/Water_Law_Seminar.aspx)

**January 23-25** – Texas Water Development Board (TWDB) Water for Texas Conference – Austin  
[waterfortexas.twdb.texas.gov](http://waterfortexas.twdb.texas.gov)

**January 25-26** – TAGD Regular Business Meeting – Austin  
[www.texasgroundwater.org/tagd-meetings-2.html](http://www.texasgroundwater.org/tagd-meetings-2.html)

**January 31** – GMA-8 Meeting – Cleburne  
[gma8.org](http://gma8.org)

Check websites for registration information.



Opening Day of the 85th Texas Legislature is January 10, 2017

## New Logo for Prairielands Groundwater Conservation District

The Prairielands Groundwater Conservation District is proud to introduce a new look to the logo this Fall.

Over the summer, staff and Texas graphics artist, Wayne Eckhardt, explored a variety of different looks and colors to better represent the mission and personality of the district. They finally focused on designs that reflected the themes of

water and prairie with the final proposal forming a water drop and a blade of prairie grass. The new design, with the names of the four counties displayed underneath the water drop, is easier to read than the previous logo, and can be used in both color and black & white formats.

It will gradually be incorporated into district forms, business tools,

and equipment as older stock is expended and replenished.



**PRAIRIELANDS GROUNDWATER  
CONSERVATION DISTRICT**  
ELLIS HILL JOHNSON SOMERVELL





Conserving, protecting, and enhancing groundwater resources in Ellis, Hill, Johnson, and Somervell counties

Mailing Address:  
PO Box 3128  
Cleburne, TX 76033  
Phone: 817-556-2299

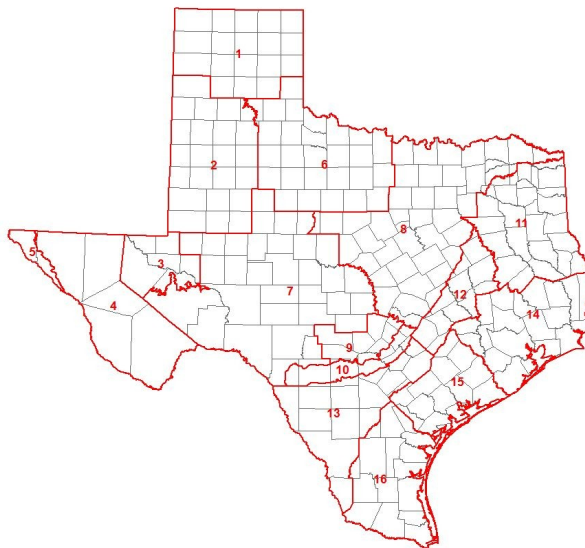
Office Location:  
205 S. Caddo Street  
Cleburne, TX 76031

We're on the web at  
[prairielandsgcd.org](http://prairielandsgcd.org).



## GMA: Who, What, and Where

The Texas Water Development Board (TWDB), working on instruction from the State Legislature through Senate Bill 2 (SB2) in 2001, placed all major and minor aquifers in 16 groundwater management areas (GMAs). At the same time, the designation of GMAs was moved from TCEQ to TWDB. Groundwater Conservation Districts (GCDs) were thus divided into these 16 GMAs based on their major aquifers and the districts were required to include in their management plans a goal quantifying the Desired Future Conditions (DFCs) of the aquifer or aquifers they spanned.



## GMA-8 Progresses Towards Adopting New Desired Future Conditions

It's the culmination of a multi-year process, but Groundwater Management Area 8 (GMA-8), the planning area that encompasses the Prairielands district, is closing in on the final adoption of new desired future conditions for north central Texas.

Desired future conditions (DFCs), in this context, is a quantitative statement of what our residents want the aquifers beneath our feet to look like in the next 50 years.

Groundwater Management Area 8 was established in 2002 by the Texas Water Development Board

and covers an area stretching from the Red River south to the Colorado River in Travis County, includes 45 counties, and is guided by representatives of the 11 area groundwater conservation districts.

Every five years GMAs just like this one work together to re-

envision the DFCs for their areas based on several factors such as water supply needs, hydrologic conditions, socioeconomic impacts, impacts on private property rights, and others.

Preliminary DFCs developed in GMA-8 were adopted on April 1, 2016, which precipitated a 90-day review and comment period by the public which ended on July 12, 2016. After review and consideration of received comments, one of the final steps is the completion of an Explanatory Report that is to be reviewed and voted on by GMA-8 representatives some time after the first of the year.



GMA-8 representatives and members of the public hear about aquifer study findings at Cleburne meeting.